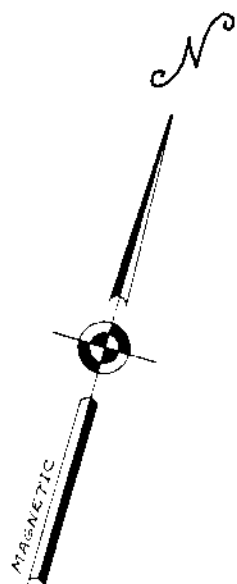
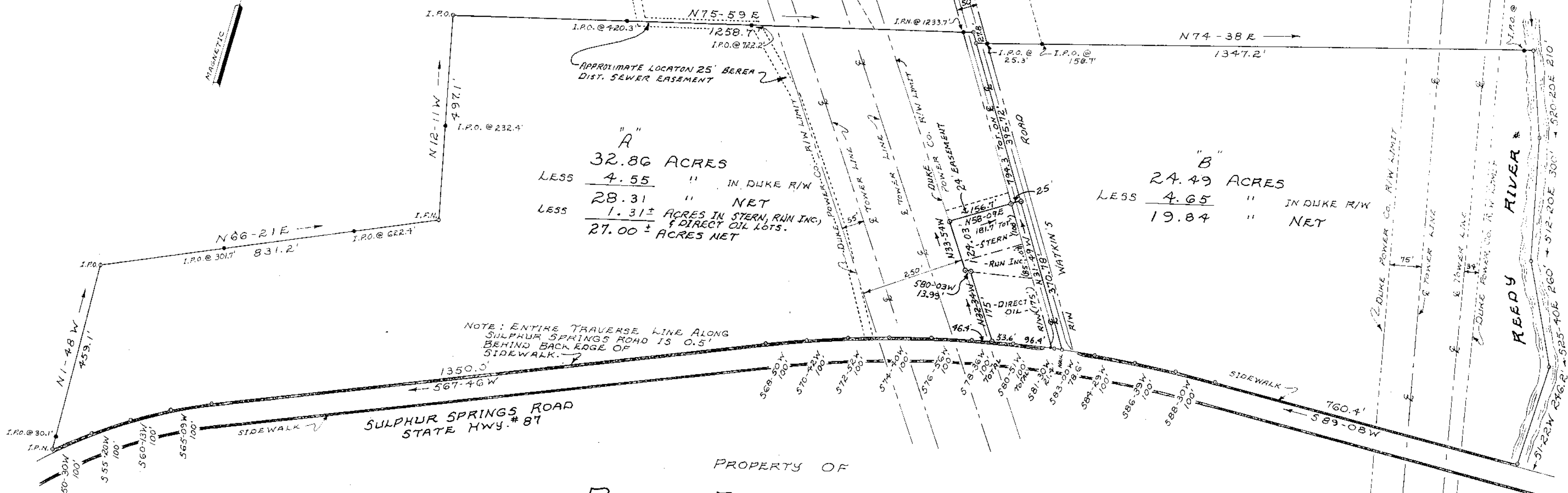


MICROFILMED



G. B. NALLEY
(NOW OR FORMERLY)

J. H. J. CORPORATION
SUBDIVISION



"A"
 32.86 ACRES
 LESS 4.55 " IN DUKE R/W
 28.31 " NET
 LESS 1.31 ± ACRES IN STERN, RUN INC. & DIRECT OIL LOTS.
 27.00 ± ACRES NET

"B"
 24.49 ACRES
 LESS 4.65 " IN DUKE R/W
 19.84 " NET

NOTE: ENTIRE TRAVERSE LINE ALONG
SULPHUR SPRINGS ROAD IS 0.5'
BEHIND BACK EDGE OF
SIDEWALK.

SULPHUR SPRINGS ROAD
STATE HWY. # 87

PROPERTY OF
RUBY R. GRAHAM, ET AL

PARIS MOUNTAIN TOWNSHIP
GREENVILLE CO., SOUTH CAROLINA
FEB. 4, 1972 SCALE 1" = 200 FEET

THIS IS TO CERTIFY THAT ON JULY 10, 1974, ENWRIGHT ASSOCIATES VISUALLY CHECKED THE
PROPERTY LINES SHOWN ON THIS PLAT; AND THAT ALL CORNERS ARE IN PLACE AS SHOWN;
AND THAT THERE ARE NO EASEMENTS, RIGHTS-OF-WAY, OR ENCROACHMENTS KNOWN TO
US, EXCEPT AS SHOWN.

7/11/74 S.C. REG. L.S.#

NOTE: PLAT AMENDED 7-11-74 TO ADD SEWER EASEMENT & RUN INC. LOT &
DIRECT OIL CO. LOT & STERN LOT.

FILED
GREENVILLE CO. S.C.
JUL 12 4 02 PM '74
DONNIE S. TANKERSLEY
R.M.C.

JUL 12 1974

RECORDING FEE
PAID \$ 3.00



enwright associates
ENGINEERS
GREENVILLE, S. C.

1326

5F-65